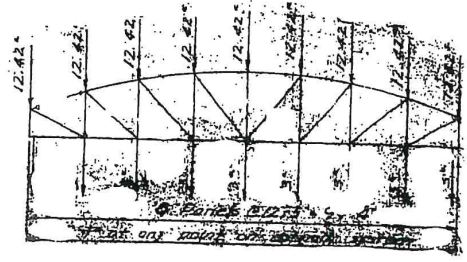
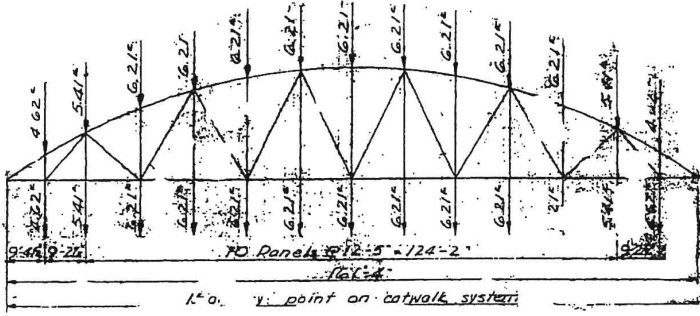


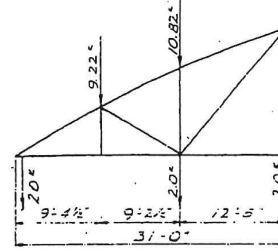
TRUSS T-1 & T-3



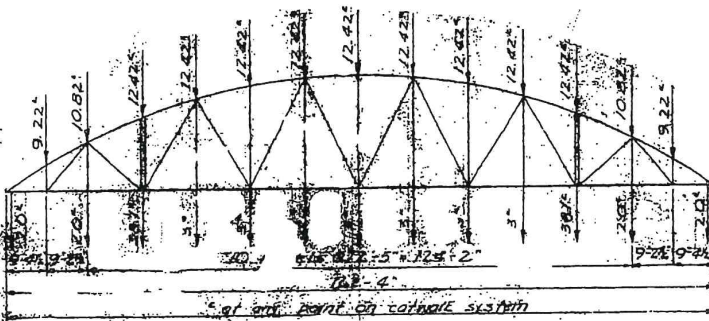
TRUSS T-5



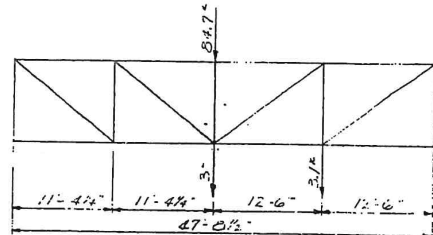
TRUSS T-2



TRUSS T-6



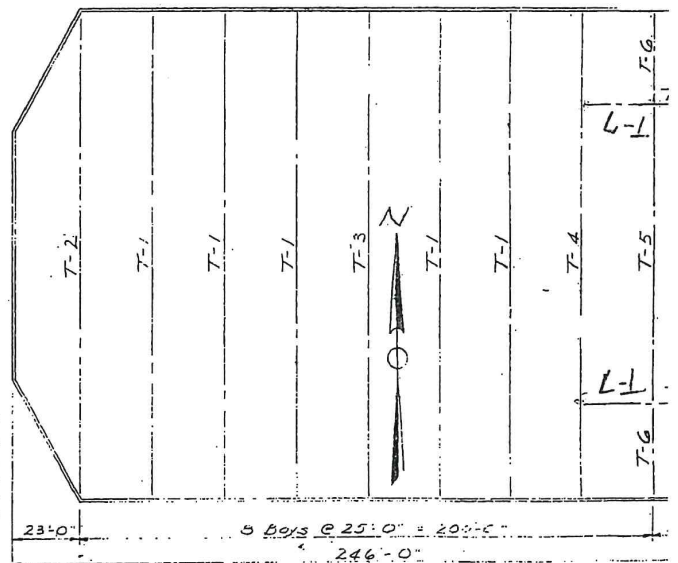
TRUSS T-4



TRUSS T-7

GENERAL NOTES:

1. Loads shown on this drawing are composed of Roof Live Load, Curtain Loads & Catwalk Live Loads. No loads are shown for the following dead loads: roofing, roof sheathing, purlins, trusses & bracing, curtain beams & catwalk framing.
2. In the design of the wood roof framing, the location of the curtain beams and the catwalks may not be changed. It will be permissible, however, to vary the purlin spacing and the spacing and arrangement of the truss web members.



TRUSS FRAMING PLAN

REVISIONS		
DATE	BY	REMARKS

SILVER BOW COUNTY  
CIVIC CENTER

BUTTE MONTANA

AUDITORIUM - ROOF TRUSS LOADS

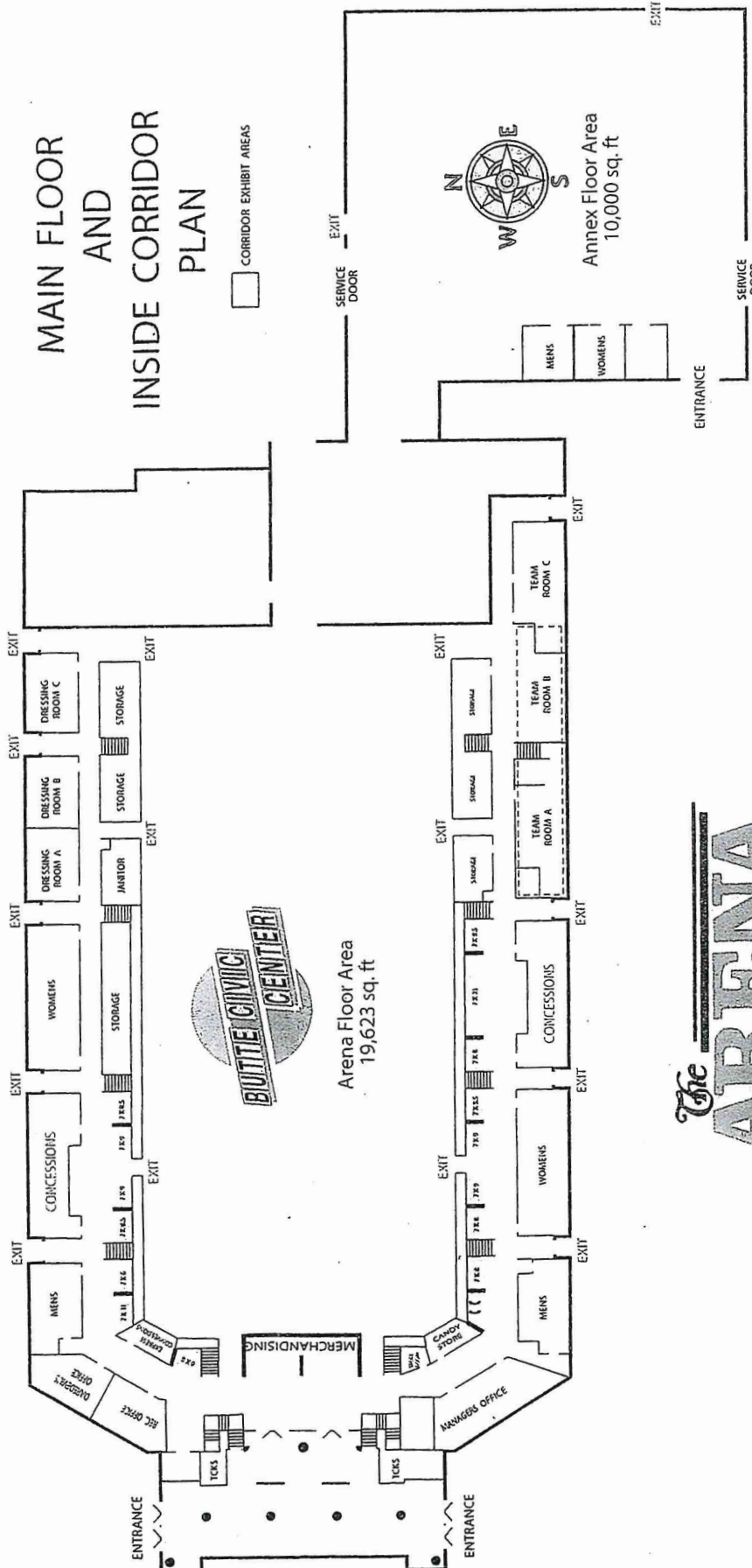
BY DATE J.G. LINK & CO. ARCHITECTS & ENGINEERS 11-25-49 4913 S-1

MOFFATT, MICHIGL & TAYLOR  
CIVIL & STRUCTURAL ENGINEERS  
PORTLAND OREGON

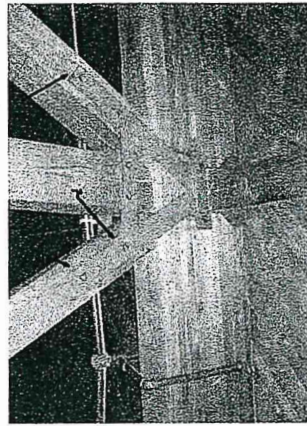
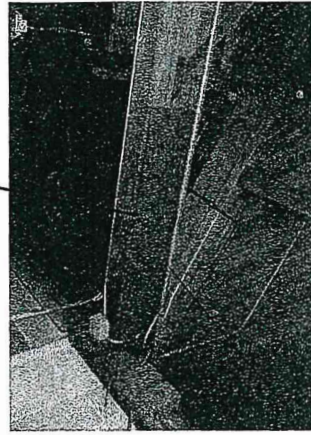
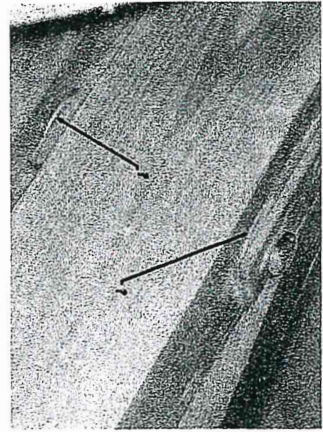
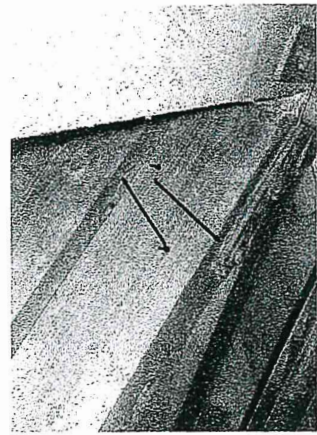


# MAIN FLOOR AND INSIDE CORRIDOR PLAN

□ CORRIDOR EXHIBIT AREAS



# The ARENA



TYPICAL CONNECTIONS WHERE SHEAR PLATES APPEAR TO PRESENT

LARGE BOTTOM CHORD CONNECTIONS LIKE THIS ARE THE MOST IMPORTANT

**ON**

**Heavy Duty  
Safety Switch**

400A 600VAC, 250VDC  
Horsepower Rated



**⚠ DANGER**

**Hazardous Voltage.  
Will cause death or  
serious injury.**

Turn off before replacing  
any fuse. Disconnect  
power before working on  
this switch. Close cover  
before turning power on.

**OFF**

DISCONNECT SD3A  
277/480 3 $\phi$

**ON**

**Heavy Duty  
Safety Switch**

400A 240VAC, 250VDC  
Horsepower Rated



**⚠ DANGER**

**Hazardous Voltage.  
Will cause death or  
serious injury.**

Turn off before replacing  
any fuse. Disconnect  
power before working on  
this switch. Close cover  
before turning power on.

**OFF**

DISCONNECT DS1A  
120/208 3 $\phi$

UP

# ON

## SIEMENS

**I-T-E® Enclosed Switch  
Heavy Duty**

**Vacu-Break® Switch with  
Clampmatic® Contacts**

Cat. No.	Series
SN427L	A
Amps	Volts A.C.
800	240
3 Phase	std.   max.
240 V.	H.P. 100   250

**Enclosure**      Type 1, Indoor

See notes and additional rating information inside.

Not for use as a motor controller over 100 horsepower.

Suitable for use as service equipment.

**⚠ DANGER**

Hazardous Voltage.  
Will cause death or serious injury.  
Do not operate switch with door open.  
If fused, turn off switch before testing, removing, or installing fuses.  
Turn off power supplying switch before performing work inside.  
Close door before turning power on.

87430

# OFF

DOWN

DISCONNECT SD2A

120/208 3Ø

## Cutler-Hammer

**General Duty Safety Switch**  
**Interrupteur de sécurité à usage général**  
**Interruptor de seguridad de servicio general**

**200 A, 240 V~, 60 Hz**

Complete Ratings Inside. Further Instructions inside.  
Valeurs nominales complètes à l'intérieur. Autres instructions à l'intérieur.  
Información completa de capacidades en el interior. Instrucciones adicionales en el interior.

**⚠ DANGER**

**HAZARDOUS VOLTAGE. WILL CAUSE SEVERE INJURY OR DEATH.**

- Never operate switch with cover open.
- Turn OFF power ahead of switch before doing any work inside. Replace all parts. Close cover before turning power ON.

**TENSION DANGEREUSE. PEUT CAUSER DES BLESSURES GRAVES OU LA MORT.**

- Ne jamais manœuvrer l'interrupteur lorsque le couvercle est ouvert.
- Couper l'alimentation en amont de l'interrupteur avant toute intervention. Remplacer les pièces. Fermer le couvercle avant de remettre sous tension.

**⚠ PELIGRO**

**VOLTAJE PELIGROSO. PUEDE CAUSAR HERIDAS SEVERAS O LA MUERTE.**

- Nunca opere el interruptor con la cubierta abierta.
- Desconectar la alimentación del interruptor antes de trabajar dentro del mismo. Reemplazar todas las partes. Cerrar la cubierta antes de energizar el interruptor.

Complete Ratings Inside. Further Instructions inside.  
Valeurs nominales complètes à l'intérieur. Autres instructions à l'intérieur.  
Información completa de capacidades en el interior. Instrucciones adicionales en el interior.

Made in U.S.A. / Fabriqué aux É.-U. / Hecho en E.U.A.

30-43100

# ON

↕

# OFF

# Spot Lights

